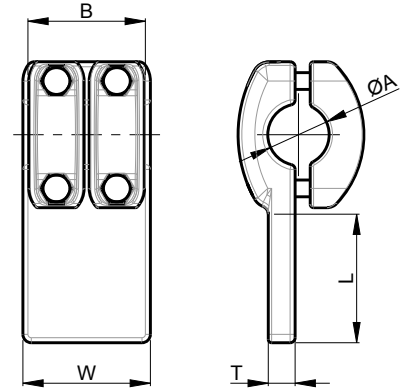


JF01

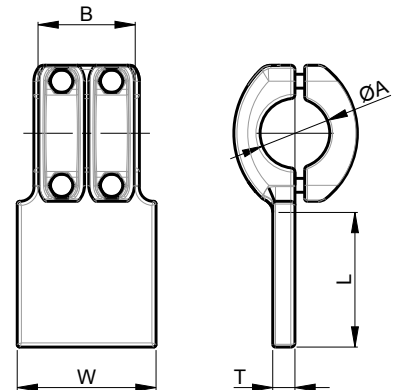
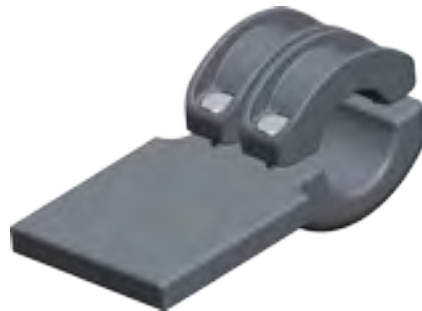
CABLE - PAD



PART NUMBER	A	COVERS A	B	L	W	T	BOLTS A	CURRENT [A]
JF01.010	16,0 - 21,6	2	66	76	76	16	M8	750
JF01.020	16,0 - 21,6	2	66	100	100	16	M8	750
JF01.030	16,0 - 21,6	2	66	125	125	16	M8	750
JF01.050	21,6 - 29,6	2	74	76	76	16	M10	1000
JF01.060	21,6 - 29,6	2	74	100	100	16	M10	1000
JF01.070	21,6 - 29,6	2	74	125	125	16	M10	1000
JF01.090	29,6 - 37,6	2	74	76	76	16	M10	1250
JF01.100	29,6 - 37,6	2	74	100	100	16	M10	1250
JF01.110	29,6 - 37,6	2	74	125	125	16	M10	1250

JF02

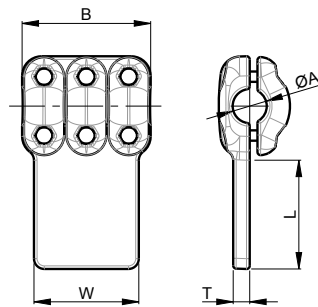
STUD - PAD



PART NUMBER	A	COVERS A	B	L	W	T	BOLTS A	CURRENT [A]
JF02.010	30	2	74	76	76	16	M10	1000
JF02.020	30	2	74	100	100	16	M10	1000
JF02.030	30	2	74	125	125	16	M10	1000
JF02.050	40	2	74	76	76	16	M10	1200
JF02.060	40	2	74	100	100	16	M10	1600
JF02.070	40	2	74	125	125	16	M10	1600
JF02.090	50	2	80	76	76	16	M12	1200
JF02.100	50	2	80	100	100	16	M12	1600
JF02.110	50	2	80	125	125	16	M12	1600

SF01

CABLE - PAD



UP TO
400kV

BIMET
CUPAL or TIN

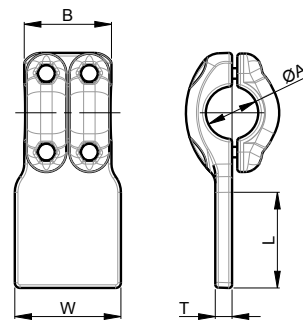
A2-70



PART NUMBER	A	COVERS A	B	L	W	T	BOLTS A	CURRENT [A]
SF01.010	16 - 24	2	72	76	76	16	M8	800
SF01.020	16 - 24	2	72	100	100	16	M8	800
SF01.030	16 - 24	2	72	125	125	16	M8	800
SF01.040	16 - 24	2	72	100	200	16	M8	800
SF01.050	24 - 33	2	82	76	76	20	M10	1250
SF01.060	24 - 33	2	82	100	100	16	M10	1250
SF01.070	24 - 33	2	82	125	125	16	M10	1250
SF01.080	24 - 33	2	82	100	200	16	M10	1250
SF01.090	33 - 45	3	123	76	76	20	M10	1600
SF01.100	33 - 45	3	123	100	100	20	M10	1600
SF01.110	33 - 45	3	123	125	125	16	M10	1600
SF01.120	33 - 45	3	123	100	200	16	M10	1600
SF01.130	45 - 50	3	123	76	76	25	M10	2000
SF01.140	45 - 50	3	123	100	100	20	M10	2000
SF01.150	45 - 50	3	123	125	125	16	M10	2000
SF01.160	45 - 50	3	123	100	200	16	M10	2000

SF03

STUD - PAD



UP TO
400kV

BIMET
CUPAL or TIN

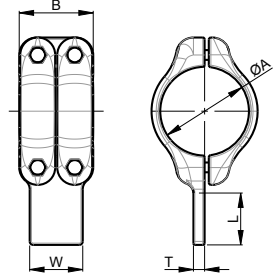
A2-70



PART NUMBER	A	COVERS A	B	L	W	T	BOLTS A	CURRENT [A]
SF03.010	30	2	82	76	76	16	M10	1000
SF03.020	30	2	82	100	100	16	M10	1000
SF03.030	30	2	82	125	125	16	M10	1000
SF03.040	30	2	82	100	200	16	M10	1000
SF03.050	40	2	82	76	76	20	M10	1600
SF03.060	40	2	82	100	100	16	M10	1600
SF03.070	40	2	82	125	125	16	M10	1600
SF03.080	40	2	82	100	200	16	M10	1600
SF03.090	50	2	92	76	76	20	M12	1600
SF03.100	50	2	92	100	100	25	M12	2500
SF03.110	50	2	92	125	125	20	M12	2500
SF03.120	50	2	92	100	200	16	M12	2500
SF03.130	60	2	92	76	76	20	M12	1600
SF03.140	60	2	92	100	100	30	M12	3200
SF03.150	60	2	92	125	125	25	M12	3200
SF03.160	60	2	92	100	200	16	M12	3200

SF02

TUBE - PAD



UP TO
400kV

BIMET
CUPAL or TIN

A2-70

PAD

PART NUMBER	A	COVERS A	B	L	W	T	BOLTS A	CURRENT [A]
SF.02.010	50 - 60	2	92	100	100	20	M12	2000
SF.02.020	50 - 60	2	92	125	125	16	M12	2000
SF.02.030	50 - 60	2	92	100	200	16	M12	2000
SF.02.040	70 - 80	2	92	100	100	25	M12	2500
SF.02.050	70 - 80	2	92	125	125	20	M12	2500
SF.02.060	70 - 80	2	92	100	200	16	M12	3200
SF.02.070	90 - 100	2	92	100	100	30	M12	3200
SF.02.080	90 - 100	2	92	125	125	25	M12	3200
SF.02.090	90 - 100	2	92	100	200	16	M12	3200
SF.02.100	120	2	106	100	100	30	M14	3200
SF.02.110	120	2	106	125	125	35	M14	4000
SF.02.120	120	2	106	100	200	20	M14	4000
SF.02.130	140 -150	2	106	100	100	30	M14	3200
SF.02.140	140 -150	2	106	125	125	35	M14	4000
SF.02.150	140 -150	2	106	100	200	20	M14	4000
SF.02.160	160-170	2	106	100	100	30	M14	3200
SF.02.170	160-170	2	106	125	125	35	M14	4000
SF.02.180	160-170	2	106	100	200	20	M14	4000
SF.02.190	200	2	116	100	100	35	M16	3600
SF.02.200	200	2	116	125	125	35	M16	4000
SF.02.210	200	2	116	100	200	20	M16	4000
SF.02.220	250	2	116	100	100	35	M16	3600
SF.02.230	250	2	116	125	125	35	M16	4000
SF.02.240	250	2	116	100	200	20	M16	4000
SF.02.510	2"IPS (60,3mm)	2	92	100	100	20	M12	2000
SF.02.520	2"IPS (60,3mm)	2	92	125	125	16	M12	2000
SF.02.530	2"IPS (60,3mm)	2	92	100	200	16	M12	2000
SF.02.540	2,5"IPS (73mm)	2	92	100	100	20	M12	2000
SF.02.550	2,5"IPS (73mm)	2	92	125	125	16	M12	2000
SF.02.560	2,5"IPS (73mm)	2	92	100	200	16	M12	2000
SF.02.570	3"IPS (88,9mm)	2	92	100	100	25	M12	2500
SF.02.580	3"IPS (88,9mm)	2	92	125	125	20	M12	2500
SF.02.590	3"IPS (88,9mm)	2	92	100	200	16	M12	2500
SF.02.600	3,5"IPS (101,6mm)	2	92	100	100	30	M12	3200
SF.02.610	3,5"IPS (101,6mm)	2	92	125	125	25	M12	3200
SF.02.620	3,5"IPS (101,6mm)	2	92	100	200	16	M12	3200
SF.02.630	4"IPS (114,3mm)	2	106	100	100	30	M14	3200
SF.02.640	4"IPS (114,3mm)	2	106	125	125	25	M14	3200
SF.02.650	4"IPS (114,3mm)	2	106	100	200	16	M14	3200
SF.02.660	5"IPS (141,3mm)	2	106	100	100	30	M14	3200
SF.02.670	5"IPS (141,3mm)	2	106	125	125	35	M14	4000
SF.02.680	5"IPS (141,3mm)	2	106	100	200	20	M14	4000
SF.02.690	6"IPS (168,2mm)	2	106	100	100	30	M14	3200
SF.02.700	6"IPS (168,2mm)	2	106	125	125	35	M14	4000
SF.02.710	6"IPS (168,2mm)	2	106	100	200	20	M14	4000
SF.02.720	8"IPS (219mm)	2	116	100	100	30	M16	3200
SF.02.730	8"IPS (219mm)	2	116	125	125	35	M16	4000
SF.02.740	8"IPS (219mm)	2	116	100	200	20	M16	4000