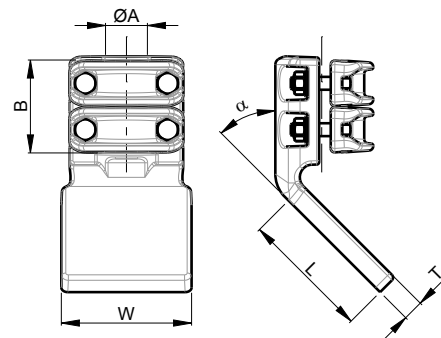


JAK01

CABLE - PAD



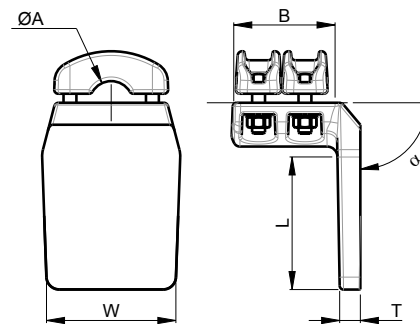
UP TO
230kV

BIMET
CUPAL or TIN

A2-70

PAD

PART NUMBER	A	COVERS	B	L	W	T	α	BOLTS A	CURRENT [A]
JAK.01.45.010	16,0 - 21,6	2	66	76	76	16	45	M8	750
JAK.01.45.020	16,0 - 21,6	2	66	100	100	16	45	M8	750
JAK.01.45.030	16,0 - 21,6	2	66	125	125	16	45	M8	750
JAK.01.45.040	21,6 - 29,6	2	74	76	76	16	45	M10	1000
JAK.01.45.050	21,6 - 29,6	2	74	100	100	16	45	M10	1000
JAK.01.45.060	21,6 - 29,6	2	74	125	125	16	45	M10	1000
JAK.01.45.070	29,6 - 37,6	2	74	76	76	16	45	M10	1250
JAK.01.45.080	29,6 - 37,6	2	74	100	100	16	45	M10	1250
JAK.01.45.090	29,6 - 37,6	2	74	125	125	16	45	M10	1250



UP TO
230kV

BIMET
CUPAL or TIN

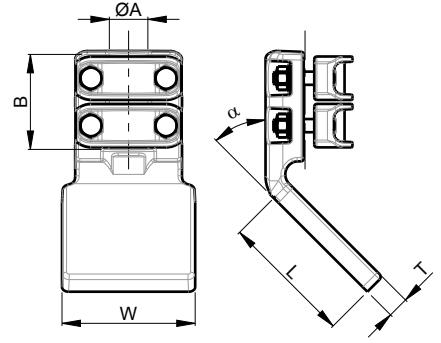
A2-70

PAD

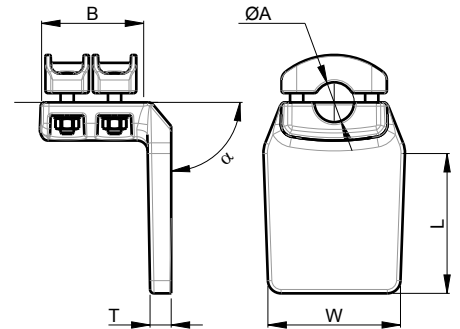
PART NUMBER	A	COVERS	B	L	W	T	α	BOLTS A	CURRENT [A]
JAK.01.90.010	16,0 - 21,6	2	66	76	76	16	90	M8	750
JAK.01.90.020	16,0 - 21,6	2	66	100	100	16	90	M8	750
JAK.01.90.030	16,0 - 21,6	2	66	125	125	16	90	M8	750
JAK.01.90.040	21,6 - 29,6	2	74	76	76	16	90	M10	1000
JAK.01.90.050	21,6 - 29,6	2	74	100	100	16	90	M10	1000
JAK.01.90.060	21,6 - 29,6	2	74	125	125	16	90	M10	1000
JAK.01.90.070	29,6 - 37,6	2	74	76	76	16	90	M10	1250
JAK.01.90.080	29,6 - 37,6	2	74	100	100	16	90	M10	1250
JAK.01.90.090	29,6 - 37,6	2	74	125	125	16	90	M10	1250

JAK02

STUD - PAD



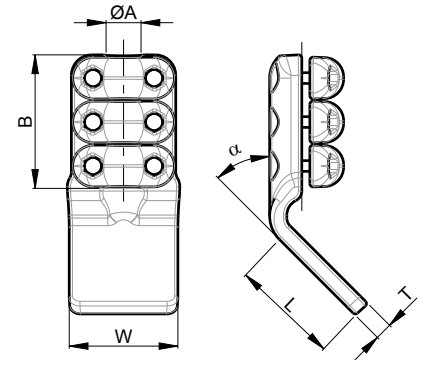
PART NUMBER	A	COVERS A	B	L	W	T	α	BOLTS A	CURRENT [A]
JAK.02.45.010	30	2	74	76	76	16	45	M10	1000
JAK.02.45.020	30	2	74	100	100	16	45	M10	1000
JAK.02.45.030	30	2	74	125	125	16	45	M10	1000
JAK.02.45.040	40	2	74	76	76	16	45	M10	1200
JAK.02.45.050	40	2	74	100	100	16	45	M10	1600
JAK.02.45.060	40	2	74	125	125	16	45	M10	1600
JAK.02.45.070	50	2	80	76	76	16	45	M12	1200
JAK.02.45.080	50	2	80	100	100	16	45	M12	1600
JAK.02.45.090	50	2	80	125	125	16	45	M12	1600



PART NUMBER	A	COVERS A	B	L	W	T	α	BOLTS A	CURRENT [A]
JAK.02.90.010	30	2	74	76	76	16	90	M10	1000
JAK.02.90.020	30	2	74	100	100	16	90	M10	1000
JAK.02.90.030	30	2	74	125	125	16	90	M10	1000
JAK.02.90.040	40	2	74	76	76	16	90	M10	1200
JAK.02.90.050	40	2	74	100	100	16	90	M10	1600
JAK.02.90.060	40	2	74	125	125	16	90	M10	1600
JAK.02.90.070	50	2	80	76	76	16	90	M12	1200
JAK.02.90.080	50	2	80	100	100	16	90	M12	1600
JAK.02.90.090	50	2	80	125	125	16	90	M12	1600

SAK01

CABLE-PAD



UP TO
400kV

BIMET
CUPAL or TIN

A2-70

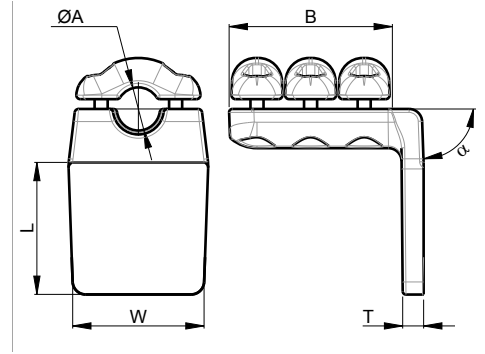
PAD

PART NUMBER	A	COVERS	B	L	W	T	α	BOLTS A	CURRENT [A]
SAK.01.45.010	16 - 24	2	72	76	76	16	45	M8	800
SAK.01.45.020	16 - 24	2	72	100	100	16	45	M8	800
SAK.01.45.030	16 - 24	2	72	125	125	16	45	M8	800
SAK.01.45.040	16 - 24	2	72	100	200	16	45	M8	800
SAK.01.45.050	24 - 33	2	82	76	76	16	45	M10	1250
SAK.01.45.060	24 - 33	2	82	100	100	16	45	M10	1250
SAK.01.45.070	24 - 33	2	82	125	125	16	45	M10	1250
SAK.01.45.080	24 - 33	2	82	100	200	16	45	M10	1250
SAK.01.45.090	33 - 45	3	123	76	76	25	45	M10	1600
SAK.01.45.100	33 - 45	3	123	100	100	20	45	M10	1600
SAK.01.45.110	33 - 45	3	123	125	125	16	45	M10	1600
SAK.01.45.120	33 - 45	3	123	100	200	16	45	M10	1600
SAK.01.45.130	45 - 50	3	123	76	76	25	45	M10	2000
SAK.01.45.140	45 - 50	3	123	100	100	20	45	M10	2000
SAK.01.45.150	45 - 50	3	123	125	125	16	45	M10	2000
SAK.01.45.160	45 - 50	3	123	100	200	16	45	M10	2000



SAK01

CABLE - PAD



UP TO
400kV

BIMET
CUPAL or TIN

A2-70

PAD

PART NUMBER	A	COVERS	B	L	W	T	α	BOLTS A	CURRENT [A]
SAK.01.90.010	16 - 24	2	72	76	76	16	90	M8	800
SAK.01.90.020	16 - 24	2	72	100	100	16	90	M8	800
SAK.01.90.030	16 - 24	2	72	125	125	16	90	M8	800
SAK.01.90.040	16 - 24	2	72	100	200	16	90	M8	800
SAK.01.90.050	24 - 33	2	82	76	76	16	90	M10	1250
SAK.01.90.060	24 - 33	2	82	100	100	16	90	M10	1250
SAK.01.90.070	24 - 33	2	82	125	125	16	90	M10	1250
SAK.01.90.080	24 - 33	2	82	100	200	16	90	M10	1250
SAK.01.90.090	33 - 45	3	123	76	76	25	90	M10	1600
SAK.01.90.100	33 - 45	3	123	100	100	20	90	M10	1600
SAK.01.90.110	33 - 45	3	123	125	125	16	90	M10	1600
SAK.01.90.120	33 - 45	3	123	100	200	16	90	M10	1600
SAK.01.90.130	45 - 50	3	123	76	76	25	90	M10	2000
SAK.01.90.140	45 - 50	3	123	100	100	20	90	M10	2000
SAK.01.90.150	45 - 50	3	123	125	125	16	90	M10	2000
SAK.01.90.160	45 - 50	3	123	100	200	16	90	M10	2000



SAK02

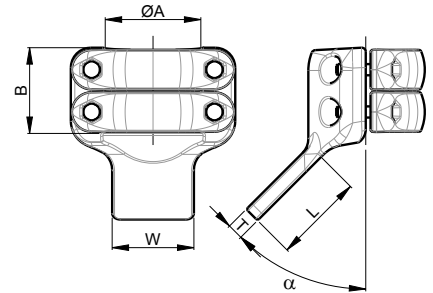
TUBE - PAD

UP TO
400kV

BIMET
CUPAL or TIN

A2-70

PAD

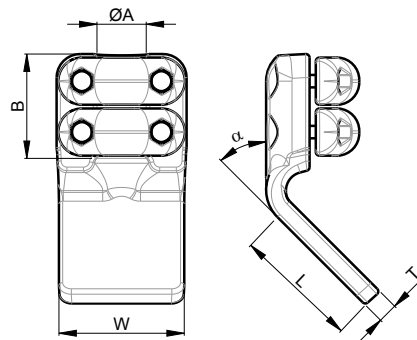


PART NUMBER	A	COVERS	B	L	W	T	α	BOLTS A	CURRENT [A]
SAK.02.45.060	50 - 60	2	92	100	100	20	45	M12	2000
SAK.02.45.070	50 - 60	2	92	125	125	16	45	M12	2000
SAK.02.45.080	50 - 60	2	92	100	200	16	45	M12	2000
SAK.02.45.100	70 - 80	2	92	100	100	25	45	M12	2500
SAK.02.45.110	70 - 80	2	92	125	125	20	45	M12	2500
SAK.02.45.120	70 - 80	2	92	100	200	16	45	M12	3200
SAK.02.45.140	90 - 100	2	92	100	100	30	45	M12	3200
SAK.02.45.150	90 - 100	2	92	125	125	25	45	M12	3200
SAK.02.45.160	90 - 100	2	92	100	200	16	45	M12	3200
SAK.02.45.180	120	2	106	100	100	30	45	M14	3200
SAK.02.45.190	120	2	106	125	125	35	45	M14	4000
SAK.02.45.200	120	2	106	100	200	20	45	M14	4000
SAK.02.45.220	140 - 150	2	106	100	100	30	45	M14	3200
SAK.02.45.230	140 - 150	2	106	125	125	35	45	M14	4000
SAK.02.45.240	140 - 150	2	106	100	200	20	45	M14	4000
SAK.02.45.260	160-170	2	106	100	100	30	45	M14	3200
SAK.02.45.270	160-170	2	106	125	125	35	45	M14	4000
SAK.02.45.280	160-170	2	106	100	200	20	45	M14	4000
SAK.02.45.300	200	2	174	100	100	35	45	M16	3600
SAK.02.45.310	200	2	174	125	125	35	45	M16	4000
SAK.02.45.320	200	2	174	100	200	20	45	M16	4000
SAK.02.45.340	250	2	174	100	100	35	45	M16	3600
SAK.02.45.350	250	2	174	125	125	35	45	M16	4000
SAK.02.45.360	250	2	174	100	200	20	45	M16	4000
SAK.02.45.510	2"IPS (60,3mm)	2	92	100	100	20	45	M12	2000
SAK.02.45.520	2"IPS (60,3mm)	2	92	125	125	16	45	M12	2000
SAK.02.45.530	2"IPS (60,3mm)	2	92	100	200	16	45	M12	2000
SAK.02.45.550	2,5"IPS (73mm)	2	92	100	100	20	45	M12	2000
SAK.02.45.560	2,5"IPS (73mm)	2	92	125	125	16	45	M12	2000
SAK.02.45.570	2,5"IPS (73mm)	2	92	100	200	16	45	M12	2000
SAK.02.45.545	3"IPS (88,9mm)	2	92	100	100	25	45	M12	2500
SAK.02.45.600	3"IPS (88,9mm)	2	92	125	125	20	45	M12	2500
SAK.02.45.610	3"IPS (88,9mm)	2	92	100	200	16	45	M12	2500
SAK.02.45.630	3,5"IPS (101,6mm)	2	92	100	100	30	45	M12	3200
SAK.02.45.640	3,5"IPS (101,6mm)	2	92	125	125	25	45	M12	3200
SAK.02.45.650	3,5"IPS (101,6mm)	2	92	100	200	16	45	M12	3200
SAK.02.45.670	4"IPS (114,3mm)	2	106	100	100	30	45	M14	3200
SAK.02.45.680	4"IPS (114,3mm)	2	106	125	125	25	45	M14	3200
SAK.02.45.645	4"IPS (114,3mm)	2	106	100	200	16	45	M14	3200
SAK.02.45.710	5"IPS (141,3mm)	2	106	100	100	30	45	M14	3200
SAK.02.45.720	5"IPS (141,3mm)	2	106	125	125	35	45	M14	4000
SAK.02.45.730	5"IPS (141,3mm)	2	106	100	200	20	45	M14	4000
SAK.02.45.750	6"IPS (168,2mm)	2	106	100	100	30	45	M14	3200
SAK.02.45.760	6"IPS (168,2mm)	2	106	125	125	35	45	M14	4000
SAK.02.45.770	6"IPS (168,2mm)	2	106	100	200	20	45	M14	4000
SAK.02.45.745	8"IPS (219mm)	2	116	100	100	30	45	M16	3200
SAK.02.45.800	8"IPS (219mm)	2	116	125	125	35	45	M16	4000
SAK.02.45.810	8"IPS (219mm)	2	116	100	200	20	45	M16	4000



SAK03

STUD - PAD

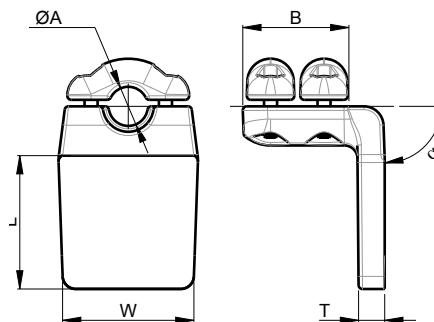


UP TO
400kV

BIMET
CUPAL or TIN



PART NUMBER	A	COVERS	B	L	W	T	α	BOLTS A	CURRENT [A]
SAK.03.45.010	30	2	82	76	76	16	45	M10	1000
SAK.03.45.020	30	2	82	100	100	16	45	M10	1000
SAK.03.45.030	30	2	82	125	125	16	45	M10	1000
SAK.03.45.040	30	2	82	100	200	16	45	M10	1000
SAK.03.45.050	40	2	82	76	76	20	45	M10	1600
SAK.03.45.060	40	2	82	100	100	16	45	M10	1600
SAK.03.45.070	40	2	82	125	125	16	45	M10	1600
SAK.03.45.080	40	2	82	100	200	16	45	M10	1600
SAK.03.45.090	50	2	92	76	76	20	45	M12	1600
SAK.03.45.100	50	2	92	100	100	25	45	M12	2500
SAK.03.45.110	50	2	92	125	125	20	45	M12	2500
SAK.03.45.120	50	2	92	100	200	16	45	M12	2500
SAK.03.45.130	60	2	92	76	76	20	45	M12	1600
SAK.03.45.140	60	2	92	100	100	30	45	M12	3200
SAK.03.45.150	60	2	92	125	125	25	45	M12	3200
SAK.03.45.160	60	2	92	100	200	16	45	M12	3200



UP TO
400kV

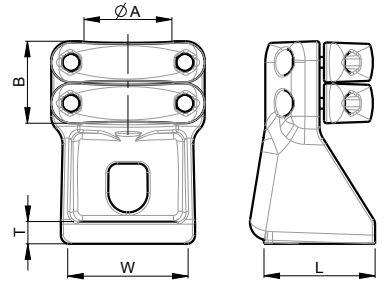
BIMET
CUPAL or TIN



PART NUMBER	A	COVERS	B	L	W	T	α	BOLTS A	CURRENT [A]
SAK.03.90.010	30	2	82	76	76	16	90	M10	1000
SAK.03.90.020	30	2	82	100	100	16	90	M10	1000
SAK.03.90.030	30	2	82	125	125	16	90	M10	1000
SAK.03.90.040	30	2	82	100	200	16	90	M10	1000
SAK.03.90.050	40	2	82	76	76	20	90	M10	1600
SAK.03.90.060	40	2	82	100	100	16	90	M10	1600
SAK.03.90.070	40	2	82	125	125	16	90	M10	1600
SAK.03.90.080	40	2	82	100	200	16	90	M10	1600
SAK.03.90.090	50	2	92	76	76	20	90	M12	1600
SAK.03.90.100	50	2	92	100	100	25	90	M12	2500
SAK.03.90.110	50	2	92	125	125	20	90	M12	2500
SAK.03.90.120	50	2	92	100	200	16	90	M12	2500
SAK.03.90.130	60	2	92	76	76	20	90	M12	1600
SAK.03.90.140	60	2	92	100	100	30	90	M12	3200
SAK.03.90.150	60	2	92	125	125	25	90	M12	3200
SAK.03.90.160	60	2	92	100	200	16	90	M12	3200

SAT01

TUBE



PART NUMBER	A	COVERS	B	L	W	T	BOLTS A	CURRENT [A]
SAT.010	50 - 60	2	92	100	100	20	M12	2000
SAT.020	50 - 60	2	92	125	125	16	M12	2000
SAT.030	50 - 60	2	92	100	200	16	M12	2000
SAT.040	70 - 80	2	92	100	100	25	M12	2500
SAT.050	70 - 80	2	92	125	125	20	M12	2500
SAT.060	70 - 80	2	92	100	200	16	M12	3200
SAT.070	90 - 100	2	92	100	100	30	M12	3200
SAT.080	90 - 100	2	92	125	125	25	M12	3200
SAT.090	90 - 100	2	92	100	200	16	M12	3200
SAT.100	120	2	106	100	100	30	M14	3200
SAT.110	120	2	106	125	125	35	M14	4000
SAT.120	120	2	106	100	200	20	M14	4000
SAT.130	140 -150	2	106	100	100	30	M14	3200
SAT.140	140 -150	2	106	125	125	35	M14	4000
SAT.150	140 -150	2	106	100	200	20	M14	4000
SAT.160	160-170	2	106	100	100	30	M14	3200
SAT.170	160-170	2	106	125	125	35	M14	4000
SAT.180	160-170	2	106	100	200	20	M14	4000
SAT.190	200	2	116	100	100	35	M16	3600
SAT.200	200	2	116	125	125	35	M16	4000
SAT.210	200	2	116	100	200	20	M16	4000
SAT.220	250	2	116	100	100	35	M16	3600
SAT.230	250	2	116	125	125	35	M16	4000
SAT.240	250	2	116	100	200	20	M16	4000
SAT.510	2"IPS (60,3mm)	2	92	100	100	20	M12	2000
SAT.520	2"IPS (60,3mm)	2	92	125	125	16	M12	2000
SAT.530	2"IPS (60,3mm)	2	92	100	200	16	M12	2000
SAT.540	2,5"IPS (73mm)	2	92	100	100	20	M12	2000
SAT.550	2,5"IPS (73mm)	2	92	125	125	16	M12	2000
SAT.560	2,5"IPS (73mm)	2	92	100	200	16	M12	2000
SAT.570	3"IPS (88,9mm)	2	92	100	100	25	M12	2500
SAT.580	3"IPS (88,9mm)	2	92	125	125	20	M12	2500
SAT.590	3"IPS (88,9mm)	2	92	100	200	16	M12	2500
SAT.600	3,5"IPS (101,6mm)	2	92	100	100	30	M12	3200
SAT.610	3,5"IPS (101,6mm)	2	92	125	125	25	M12	3200
SAT.620	3,5"IPS (101,6mm)	2	92	100	200	16	M12	3200
SAT.630	4"IPS (114,3mm)	2	106	100	100	30	M14	3200
SAT.640	4"IPS (114,3mm)	2	106	125	125	25	M14	3200
SAT.650	4"IPS (114,3mm)	2	106	100	200	16	M14	3200
SAT.660	5"IPS (141,3mm)	2	106	100	100	30	M14	3200
SAT.670	5"IPS (141,3mm)	2	106	125	125	35	M14	4000
SAT.680	5"IPS (141,3mm)	2	106	100	200	20	M14	4000
SAT.690	6"IPS (168,2mm)	2	106	100	100	30	M14	3200
SAT.700	6"IPS (168,2mm)	2	106	125	125	35	M14	4000
SAT.710	6"IPS (168,2mm)	2	106	100	200	20	M14	4000
SAT.720	8"IPS (219mm)	2	116	100	100	30	M16	3200
SAT.730	8"IPS (219mm)	2	116	125	125	35	M16	4000
SAT.740	8"IPS (219mm)	2	116	100	200	20	M16	4000