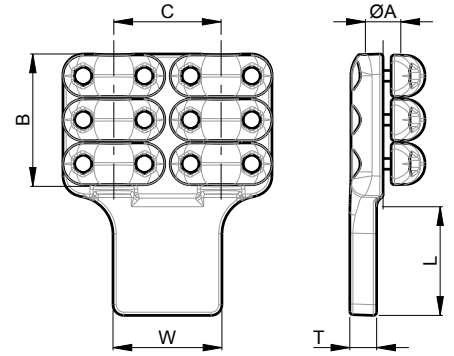


# SDA

CABLE - PAD



UP TO  
**400kV**

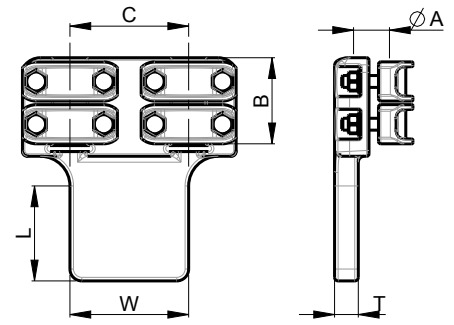
**BIMET**  
CUPAL or TIN



PART NUMBER	A	B	C	COVERS A	L	W	T	BOLTS A	CURRENT [A]
SDA.100.010	16 - 24	72	100	2	100	100	16	M8	1600
SDA.100.020	16 - 24	72	100	2	125	125	16	M8	1600
SDA.100.030	16 - 24	72	100	2	100	200	16	M8	1600
SDA.100.040	24 - 33	82	100	2	100	100	25	M10	2500
SDA.100.050	24 - 33	82	100	2	125	125	20	M10	2500
SDA.100.060	24 - 33	82	100	2	100	200	16	M10	2500
SDA.100.070	33 - 45	123	113	3	100	100	35	M10	3200
SDA.100.080	33 - 45	123	113	3	125	125	25	M10	3200
SDA.100.090	33 - 45	123	113	3	100	200	16	M10	3200
SDA.100.100	45 - 50	123	118	3	100	100	40	M10	4000
SDA.100.110	45 - 50	123	118	3	125	125	35	M10	4000
SDA.100.120	45 - 50	123	118	3	100	200	20	M10	4000
SDA.200.010	16 - 24	72	200	2	100	100	16	M8	1600
SDA.200.020	16 - 24	72	200	2	125	125	16	M8	1600
SDA.200.030	16 - 24	72	200	2	100	200	16	M8	1600
SDA.200.040	24 - 33	82	200	2	100	100	25	M10	2500
SDA.200.050	24 - 33	82	200	2	125	125	20	M10	2500
SDA.200.060	24 - 33	82	200	2	100	200	16	M10	2500
SDA.200.070	33 - 45	123	200	3	100	100	35	M10	3200
SDA.200.080	33 - 45	123	200	3	125	125	25	M10	3200
SDA.200.090	33 - 45	123	200	3	100	200	16	M10	3200
SDA.200.100	45 - 50	123	200	3	100	100	40	M10	4000
SDA.200.110	45 - 50	123	200	3	125	125	35	M10	4000
SDA.200.120	45 - 50	123	200	3	100	200	20	M10	4000

## JDA

CABLE - PAD



UP TO  
**230kV**

**BIMET**  
CUPAL or TIN

**A2-70**



PART NUMBER	A	B	C	COVERS A	L	W	T	BOLTS A	CURRENT [A]
JDA.100.010	16,0 - 21,6	66	100	2	100	100	16	M8	1500
JDA.100.020	16,0 - 21,6	66	100	2	125	125	16	M8	1500
JDA.100.030	16,0 - 21,6	66	100	2	100	200	16	M8	1500
JDA.100.040	21,6 - 29,6	74	100	2	100	100	20	M10	2000
JDA.100.050	21,6 - 29,6	74	100	2	125	125	16	M10	2000
JDA.100.060	21,6 - 29,6	74	100	2	100	200	16	M10	2000
JDA.100.070	29,6 - 37,6	74	100	2	100	100	25	M10	2500
JDA.100.080	29,6 - 37,6	74	100	2	125	125	20	M10	2500
JDA.100.090	29,6 - 37,6	74	100	2	100	200	16	M10	2500
JDA.200.010	16,0 - 21,6	66	200	2	100	100	16	M8	1500
JDA.200.020	16,0 - 21,6	66	200	2	125	125	16	M8	1500
JDA.200.030	16,0 - 21,6	66	200	2	100	200	16	M8	1500
JDA.200.040	21,6 - 29,6	74	200	2	100	100	20	M10	2000
JDA.200.050	21,6 - 29,6	74	200	2	125	125	16	M10	2000
JDA.200.060	21,6 - 29,6	74	200	2	100	200	16	M10	2000
JDA.200.070	29,6 - 37,6	74	200	2	100	100	25	M10	2500
JDA.200.080	29,6 - 37,6	74	200	2	125	125	20	M10	2500
JDA.200.090	29,6 - 37,6	74	200	2	100	200	16	M10	2500

