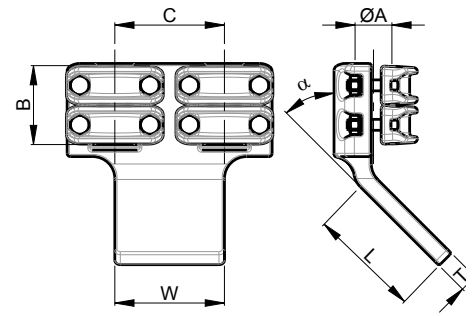


JDAK45

CABLE - PAD



UP TO
230kV

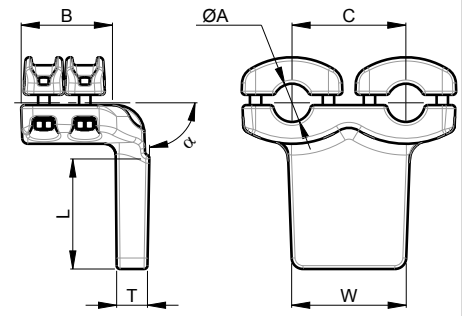
BIMET
CUPAL or TIN



PART NUMBER	A	B	C	COVERS A	L	W	T	A	BOLTS A	CURRENT [A]
JDAK.45.100.010	16,0 - 21,6	66	100	2	100	100	16	45	M8	1500
JDAK.45.100.020	16,0 - 21,6	66	100	2	125	125	16	45	M8	1500
JDAK.45.100.030	16,0 - 21,6	66	100	2	100	200	16	45	M8	1500
JDAK.45.100.040	21,6 - 29,6	74	100	2	100	100	20	45	M10	2000
JDAK.45.100.050	21,6 - 29,6	74	100	2	125	125	16	45	M10	2000
JDAK.45.100.060	21,6 - 29,6	74	100	2	100	200	16	45	M10	2000
JDAK.45.100.070	29,6 - 37,6	74	100	2	100	100	25	45	M10	2500
JDAK.45.100.080	29,6 - 37,6	74	100	2	125	125	20	45	M10	2500
JDAK.45.100.090	29,6 - 37,6	74	100	2	100	200	16	45	M10	2500
JDAK.45.200.010	16,0 - 21,6	66	200	2	100	100	16	45	M8	1500
JDAK.45.200.020	16,0 - 21,6	66	200	2	125	125	16	45	M8	1500
JDAK.45.200.030	16,0 - 21,6	66	200	2	100	200	16	45	M8	1500
JDAK.45.200.040	21,6 - 29,6	74	200	2	100	100	20	45	M10	2000
JDAK.45.200.050	21,6 - 29,6	74	200	2	125	125	16	45	M10	2000
JDAK.45.200.060	21,6 - 29,6	74	200	2	100	200	16	45	M10	2000
JDAK.45.200.070	29,6 - 37,6	74	200	2	100	100	25	45	M10	2500
JDAK.45.200.080	29,6 - 37,6	74	200	2	125	125	20	45	M10	2500
JDAK.45.200.090	29,6 - 37,6	74	200	2	100	200	16	45	M10	2500

JDAK90

CABLE - PAD



UP TO
230kV

BIMET
CUPAL or TIN

A2-70

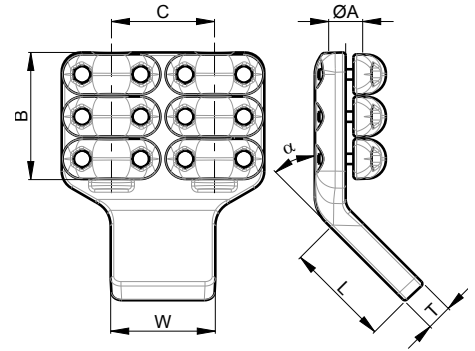
PAD



PART NUMBER	A	B	C	COVERS A	L	W	T	A	BOLTS A	CURRENT [A]
JDAK.90.100.010	16,0 - 21,6	66	100	2	100	100	16	90	M8	1500
JDAK.90.100.020	16,0 - 21,6	66	100	2	125	125	16	90	M8	1500
JDAK.90.100.030	16,0 - 21,6	66	100	2	100	200	16	90	M8	1500
JDAK.90.100.040	21,6 - 29,6	74	100	2	100	100	20	90	M10	2000
JDAK.90.100.050	21,6 - 29,6	74	100	2	125	125	16	90	M10	2000
JDAK.90.100.060	21,6 - 29,6	74	100	2	100	200	16	90	M10	2000
JDAK.90.100.070	29,6 - 37,6	74	100	2	100	100	25	90	M10	2500
JDAK.90.100.080	29,6 - 37,6	74	100	2	125	125	20	90	M10	2500
JDAK.90.100.090	29,6 - 37,6	74	100	2	100	200	16	90	M10	2500
JDAK.90.200.010	16,0 - 21,6	66	200	2	100	100	16	90	M8	1500
JDAK.90.200.020	16,0 - 21,6	66	200	2	125	125	16	90	M8	1500
JDAK.90.200.030	16,0 - 21,6	66	200	2	100	200	16	90	M8	1500
JDAK.90.200.040	21,6 - 29,6	74	200	2	100	100	20	90	M10	2000
JDAK.90.200.050	21,6 - 29,6	74	200	2	125	125	16	90	M10	2000
JDAK.90.200.060	21,6 - 29,6	74	200	2	100	200	16	90	M10	2000
JDAK.90.200.070	29,6 - 37,6	74	200	2	100	100	25	90	M10	2500
JDAK.90.200.080	29,6 - 37,6	74	200	2	125	125	20	90	M10	2500
JDAK.90.200.090	29,6 - 37,6	74	200	2	100	200	16	90	M10	2500

SDAK45

CABLE - PAD



UP TO
400kV

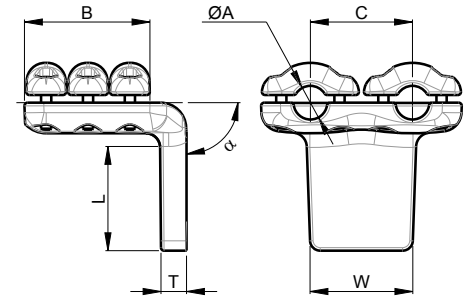
BIMET
CUPAL or TIN



PART NUMBER	A	B	C	COVERS A	L	W	T	α	BOLTS A	CURRENT [A]
SDAK.45.100.010	16 - 24	72	100	2	100	100	16	45	M8	1600
SDAK.45.100.020	16 - 24	72	100	2	125	125	16	45	M8	1600
SDAK.45.100.030	16 - 24	72	100	2	100	200	16	45	M8	1600
SDAK.45.100.040	24 - 33	82	100	2	100	100	25	45	M10	2500
SDAK.45.100.050	24 - 33	82	100	2	125	125	20	45	M10	2500
SDAK.45.100.060	24 - 33	82	100	2	100	200	16	45	M10	2500
SDAK.45.100.070	33 - 45	123	113	3	100	100	35	45	M10	3200
SDAK.45.100.080	33 - 45	123	113	3	125	125	25	45	M10	3200
SDAK.45.100.090	33 - 45	123	113	3	100	200	16	45	M10	3200
SDAK.45.100.100	45 - 50	123	118	3	100	100	40	45	M10	4000
SDAK.45.100.110	45 - 50	123	118	3	125	125	35	45	M10	4000
SDAK.45.100.120	45 - 50	123	118	3	100	200	20	45	M10	4000
SDAK.45.200.010	16 - 24	72	200	2	100	100	16	45	M8	1600
SDAK.45.200.020	16 - 24	72	200	2	125	125	16	45	M8	1600
SDAK.45.200.030	16 - 24	72	200	2	100	200	16	45	M8	1600
SDAK.45.200.040	24 - 33	82	200	2	100	100	25	45	M10	2500
SDAK.45.200.050	24 - 33	82	200	2	125	125	20	45	M10	2500
SDAK.45.200.060	24 - 33	82	200	2	100	200	16	45	M10	2500
SDAK.45.200.070	33 - 45	123	200	3	100	100	35	45	M10	3200
SDAK.45.200.080	33 - 45	123	200	3	125	125	25	45	M10	3200
SDAK.45.200.090	33 - 45	123	200	3	100	200	16	45	M10	3200
SDAK.45.200.200	45 - 50	123	200	3	100	100	40	45	M10	4000
SDAK.45.200.110	45 - 50	123	200	3	125	125	35	45	M10	4000
SDAK.45.200.120	45 - 50	123	200	3	100	200	20	45	M10	4000

SDAK90

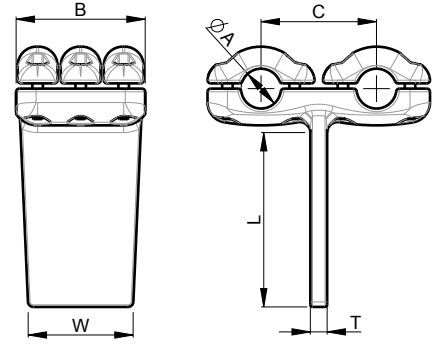
CABLE - PAD



PART NUMBER	A	B	C	COVERS A	L	W	T	α	BOLTS A	CURRENT [A]
SDAK.90.100.010	16 - 24	72	100	2	100	100	16	90	M8	1600
SDAK.90.100.020	16 - 24	72	100	2	125	125	16	90	M8	1600
SDAK.90.100.030	16 - 24	72	100	2	100	200	16	90	M8	1600
SDAK.90.100.040	24 - 33	82	100	2	100	100	25	90	M10	2500
SDAK.90.100.050	24 - 33	82	100	2	125	125	20	90	M10	2500
SDAK.90.100.060	24 - 33	82	100	2	100	200	16	90	M10	2500
SDAK.90.100.070	33 - 45	123	113	3	100	100	35	90	M10	3200
SDAK.90.100.080	33 - 45	123	113	3	125	125	25	90	M10	3200
SDAK.90.100.090	33 - 45	123	113	3	100	200	16	90	M10	3200
SDAK.90.100.100	45 - 50	123	118	3	100	100	40	90	M10	4000
SDAK.90.100.110	45 - 50	123	118	3	125	125	35	90	M10	4000
SDAK.90.100.120	45 - 50	123	118	3	100	200	20	90	M10	4000
SDAK.90.200.010	16 - 24	72	200	2	100	100	16	90	M8	1600
SDAK.90.200.020	16 - 24	72	200	2	125	125	16	90	M8	1600
SDAK.90.200.030	16 - 24	72	200	2	100	200	16	90	M8	1600
SDAK.90.200.040	24 - 33	82	200	2	100	100	25	90	M10	2500
SDAK.90.200.050	24 - 33	82	200	2	125	125	20	90	M10	2500
SDAK.90.200.060	24 - 33	82	200	2	100	200	16	90	M10	2500
SDAK.90.200.070	33 - 45	123	200	3	100	100	35	90	M10	3200
SDAK.90.200.080	33 - 45	123	200	3	125	125	25	90	M10	3200
SDAK.90.200.090	33 - 45	123	200	3	100	200	16	90	M10	3200
SDAK.90.200.200	45 - 50	123	200	3	100	100	40	90	M10	4000
SDAK.90.200.110	45 - 50	123	200	3	125	125	35	90	M10	4000
SDAK.90.200.120	45 - 50	123	200	3	100	200	20	90	M10	4000

SDF

CABLE - PAD



PART NUMBER	A	B	C	COVERS A	L	W	T	BOLTS A	CURRENT [A]
SDF.100.010	16 - 24	72	100	2	100	100	16	M8	1600
SDF.100.020	16 - 24	72	100	2	125	125	16	M8	1600
SDF.100.030	16 - 24	72	100	2	100	200	16	M8	1600
SDF.100.040	24 - 33	82	100	2	100	100	25	M10	2500
SDF.100.050	24 - 33	82	100	2	125	125	20	M10	2500
SDF.100.060	24 - 33	82	100	2	100	200	16	M10	2500
SDF.100.070	33 - 45	123	113	3	100	100	35	M10	3200
SDF.100.080	33 - 45	123	113	3	125	125	25	M10	3200
SDF.100.090	33 - 45	123	113	3	100	200	16	M10	3200
SDF.100.100	45 - 50	123	118	3	100	100	40	M10	4000
SDF.100.110	45 - 50	123	118	3	125	125	35	M10	4000
SDF.100.120	45 - 50	123	118	3	100	200	20	M10	4000
SDF.200.010	16 - 24	72	200	2	100	100	16	M8	1600
SDF.200.020	16 - 24	72	200	2	125	125	16	M8	1600
SDF.200.030	16 - 24	72	200	2	100	200	16	M8	1600
SDF.200.040	24 - 33	82	200	2	100	100	25	M10	2500
SDF.200.050	24 - 33	82	200	2	125	125	20	M10	2500
SDF.200.060	24 - 33	82	200	2	100	200	16	M10	2500
SDF.200.070	33 - 45	123	200	3	100	100	35	M10	3200
SDF.200.080	33 - 45	123	200	3	125	125	25	M10	3200
SDF.200.090	33 - 45	123	200	3	100	200	16	M10	3200
SDF.200.100	45 - 50	123	200	3	100	100	40	M10	4000
SDF.200.110	45 - 50	123	200	3	125	125	35	M10	4000
SDF.200.120	45 - 50	123	200	3	100	200	20	M10	4000

