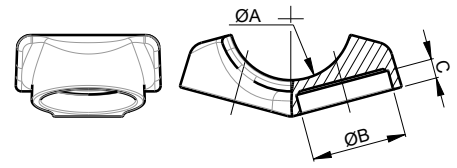


# SWAT30

AL WELD A-FRAME CONNECTOR

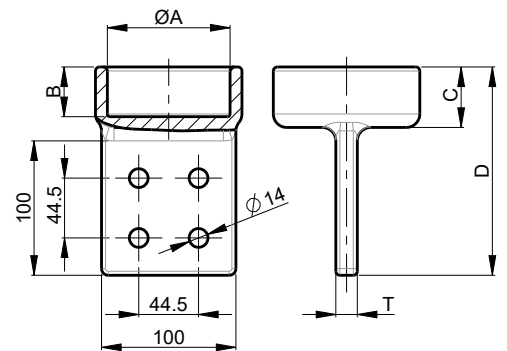


UP TO  
400kV

PART NUMBER	A (RUN)	B (TAP)	C
SWAT18A16A30	2"IPS (60mm)	1,25"IPS (42mm)	25
SWAT18A17A30		1,5"IPS (48mm)	25
SWAT18A18A30		2"IPS (60mm)	25
SWAT19A16A30	2,5"IPS (73mm)	1,25"IPS (42mm)	25
SWAT19A17A30		1,5"IPS (48mm)	25
SWAT19A18A30		2"IPS (60mm)	25
SWAT20A17A30	3"IPS (88,9mm)	1,5"IPS (48mm)	25
SWAT20A18A30		2"IPS (60mm)	25
SWAT20A19A30		2,5"IPS (73mm)	35
SWAT21A16A30	3,5"IPS (101,6mm)	1,25"IPS (42mm)	25
SWAT21A17A30		1,5"IPS (48mm)	25
SWAT21A18A30		2"IPS (60mm)	25
SWAT21A19A30		2,5"IPS (73mm)	35
SWAT21A20A30		3"IPS (88,9mm)	35
SWAT22A18A30	4"IPS (114,3mm)	2"IPS (60mm)	25
SWAT22A19A30		2,5"IPS (73mm)	35
SWAT22A20A30		3"IPS (88,9mm)	35
SWAT24A18A30	"5"IPS (141,3mm)	4"IPS (114,3mm)	35
SWAT24A19A30		2,5"IPS (73mm)	35
SWAT24A20A30		3"IPS (88,9mm)	35
SWAT86A20A30	"6"IPS (168mm)	3"IPS (88,9mm)	35
SWAT86A21A30		3,5"IPS (101,6mm)	35
SWAT86A22A30		4"IPS (114,3mm)	35

# SWAC

AL WELD COUPLER TERMINAL



UP TO  
400kV



PART NUMBER SCH.40	PART NUMBER SCH.80	80A	B	C	D	T
SWAC18A4NAWS	SWAC58A4NAWS	2"IPS (60mm)	35	45	155	16
SWAC19A4NAWS	SWAC59A4NAWS	2,5"IPS (73mm)	35	45	155	16
SWAC20A4NAWS	SWAC90A4NAWS	3"IPS (88,9mm)	35	47	157	16
SWAC21A4NAWS	SWAC91A4NAWS	3,5"IPS (101,6mm)	35	47	157	16
SWAC22A4NAWS	SWAC92A4NAWS	4"IPS (114,3mm)	35	47	157	20
SWAC24A4NAWS	SWAC94A4NAWS	5"IPS (141,3mm)	35	47	157	20
SWAC86A4NAWS	SWAC96A4NAWS	6"IPS (168mm)	41	53	163	25