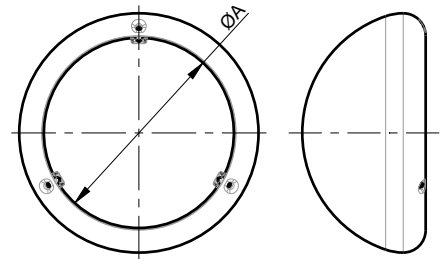
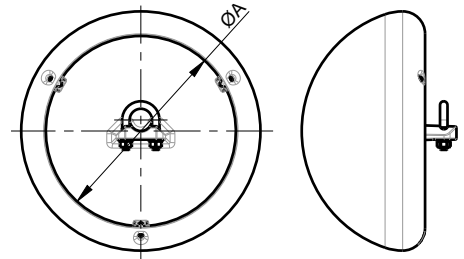
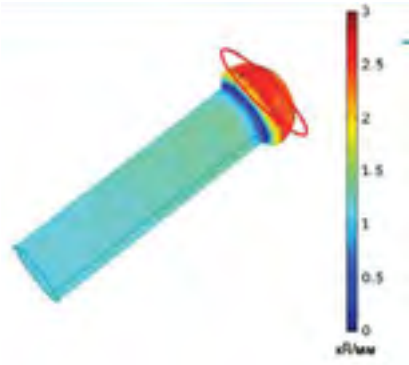


# SCBB

AL CORONA END CAP



UP TO  
**400kV**

**A2-70**

PART NUMBER	A	BOLTS
SCBB172A	50	M6X12 - DIN914
SCBB18A	60	M6X12 - DIN914
SCBB188A	70	M6X12 - DIN914
SCBB195A	80	M6X12 - DIN914
SCBB201A	90	M6X12 - DIN914
SCBB209A	100	M6X12 - DIN914
SCBB225A	120	M6X12 - DIN914
SCBB229A	125	M6X12 - DIN914
SCBB248A	150	M6X12 - DIN914
SCBB855A	160	M6X12 - DIN914
SCBB873A	200	M6X12 - DIN914
SCBB250A	250	M8X20 - DIN914
SCBB300A	300	M8X20 - DIN914

FOR DAMPING CABLE VERSION ADD AT THE END OF THE PART NUMBER: GE16 (Ø15.0-21.0) GE11 (Ø21.0-29.5) GE13 (Ø29.5-35.0) GE15 (Ø35.0-42.0)

