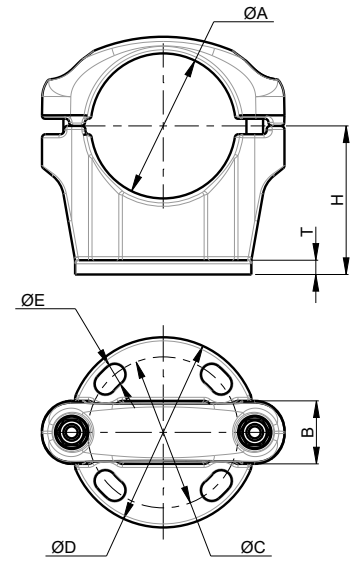


# SHB

TUBE



UP TO  
**400kV**

**A2-70**

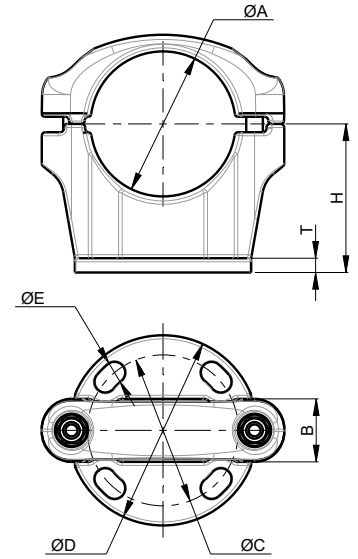


PART NUMBER	A	B	H	C	D	E	T	BOLTS A
SHB.03.010	30 - 40	41	90	76	110	14	12	M10
SHB.05.010	30 - 40	41	90	127	160	18	12	M10
SHB.89.010	30 - 40	41	90	225	265	18	15	M10
SHB.03.020	50 - 60	46	112	76	110	14	12	M12
SHB.05.020	50 - 60	46	112	127	160	18	12	M12
SHB.89.020	50 - 60	46	112	225	265	18	15	M12
SHB.03.030	70 - 80	46	112	76	110	14	12	M12
SHB.05.030	70 - 80	46	112	127	160	18	12	M12
SHB.89.030	70 - 80	46	112	225	265	18	15	M12
SHB.03.040	90 - 100	46	112	76	110	14	12	M12
SHB.05.040	90 - 100	46	112	127	160	18	12	M12
SHB.89.040	90 - 100	46	112	225	265	18	15	M12
SHB.03.050	120	53	125	76	110	14	12	M14
SHB.05.050	120	53	125	127	160	18	12	M14
SHB.89.050	120	53	125	225	265	18	15	M14
SHB.03.060	140 -150	53	150	76	110	14	12	M14
SHB.05.060	140 -150	53	150	127	160	18	12	M14
SHB.89.060	140 -150	53	150	225	265	18	15	M14
SHB.03.070	160-170	53	160	76	110	14	12	M14
SHB.05.070	160-170	53	160	127	160	18	12	M14
SHB.89.070	160-170	53	160	225	265	18	15	M14
SHB.03.080	200	58	190	76	110	14	12	M16
SHB.05.080	200	58	190	127	160	18	12	M16
SHB.89.080	200	58	190	225	265	18	15	M16
SHB.03.090	250	58	212	76	110	14	12	M16
SHB.05.090	250	58	212	127	160	18	12	M16
SHB.89.090	250	58	212	225	265	18	15	M16
SHB.03.100	300	58	236	76	110	14	12	M16
SHB.05.100	300	58	236	127	160	18	12	M16
SHB.89.100	300	58	236	225	265	18	15	M16



# SHB

TUBE



PART NUMBER	A	B	H	C	D	E	T	BOLTS A
SHB.03.500	2"IPS (60,3mm)	46	112	76	110	14	12	M12
SHB.05.500	2"IPS (60,3mm)	46	112	127	160	18	12	M12
SHB.89.500	2"IPS (60,3mm)	46	112	225	265	18	15	M12
SHB.03.510	2,5"IPS (73mm)	46	112	76	110	14	12	M12
SHB.05.510	2,5"IPS (73mm)	46	112	127	160	18	12	M12
SHB.89.510	2,5"IPS (73mm)	46	112	225	265	18	15	M12
SHB.03.520	3"IPS (88,9mm)	46	112	76	110	14	12	M12
SHB.05.520	3"IPS (88,9mm)	46	112	127	160	18	12	M12
SHB.89.520	3"IPS (88,9mm)	46	112	225	265	18	15	M12
SHB.03.530	3,5"IPS (101,6mm)	46	112	76	110	14	12	M12
SHB.05.530	3,5"IPS (101,6mm)	46	112	127	160	18	12	M12
SHB.89.530	3,5"IPS (101,6mm)	46	112	225	265	18	15	M12
SHB.03.540	4"IPS (114,3mm)	53	150	76	110	14	12	M14
SHB.05.540	4"IPS (114,3mm)	53	150	127	160	18	12	M14
SHB.89.540	4"IPS (114,3mm)	53	150	225	265	18	15	M14
SHB.03.550	5"IPS (141,3mm)	53	150	76	110	14	12	M14
SHB.05.550	5"IPS (141,3mm)	53	150	127	160	18	12	M14
SHB.89.550	5"IPS (141,3mm)	53	150	225	265	18	15	M14
SHB.03.560	6"IPS (168,2mm)	53	160	76	110	14	12	M14
SHB.05.560	6"IPS (168,2mm)	53	160	127	160	18	12	M14
SHB.89.560	6"IPS (168,2mm)	53	160	225	265	18	15	M14
SHB.03.570	8"IPS (219mm)	58	212	76	110	14	12	M16
SHB.05.570	8"IPS (219mm)	58	212	127	160	18	12	M16
SHB.89.570	8"IPS (219mm)	58	212	225	265	18	15	M16



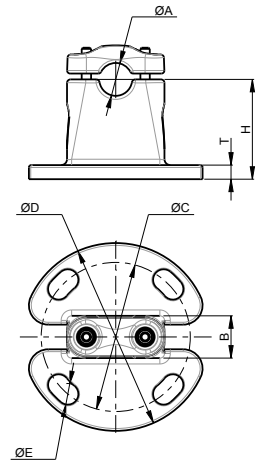
## BUSBARS SUPPORTS FIXED & SLIDING POSITION

A reversible cap allows in the same connector two possible positions



# SHB

CABLE

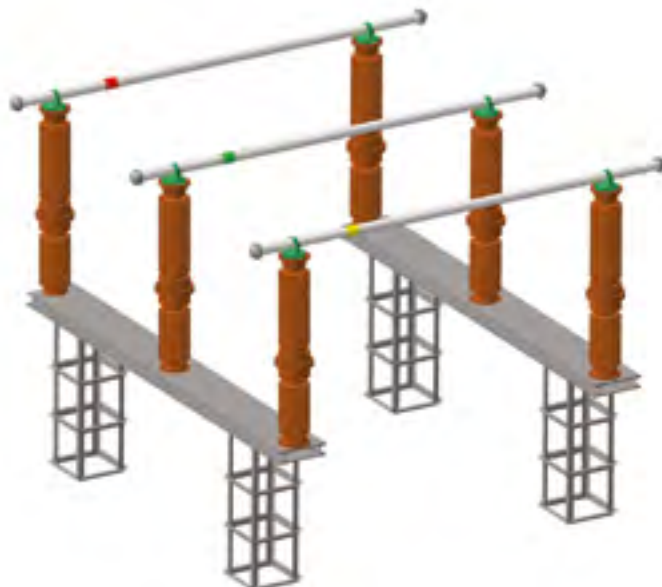


UP TO  
**400kV**

**A2-70**

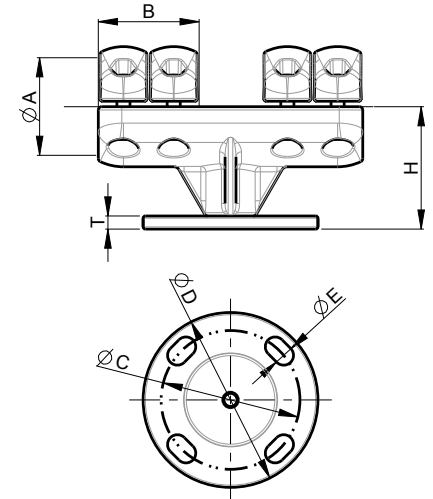


PART NUMBER	A	B	H	C	D	E	T	BOLTS A
SHB.03.300	16 - 24	36	85	76	110	14	12	M8
SHB.05.300	16 - 24	36	85	127	160	18	12	M8
SHB.89.300	16 - 24	36	85	225	265	18	15	M8
SHB.03.310	24 - 33	41	90	76	110	14	12	M10
SHB.05.310	24 - 33	41	90	127	160	18	12	M10
SHB.89.310	24 - 33	41	90	225	265	18	15	M10
SHB.03.320	33 - 45	41	90	76	110	14	12	M10
SHB.05.320	33 - 45	41	90	127	160	18	12	M10
SHB.89.320	33 - 45	41	90	225	265	18	15	M10
SHB.03.330	45 - 50	41	90	76	110	14	12	M10
SHB.05.330	45 - 50	41	90	127	160	18	12	M10
SHB.89.330	45 - 50	41	90	225	265	18	15	M10



# SHSB

TUBE - TUBE



UP TO  
**400kV**

**A2-70**

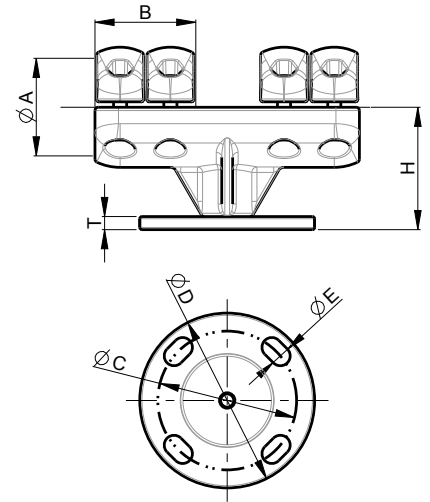


PART NUMBER	A	COVERS A	B	H	C	D	E	T	BOLTS A
SHSB.03.010	50 - 60	2	92	112	76	110	14	12	M12
SHSB.05.010	50 - 60	2	92	112	127	160	18	12	M12
SHSB.89.010	50 - 60	2	92	112	225	265	18	15	M12
SHSB.03.020	70 - 80	2	92	112	76	110	14	12	M12
SHSB.05.020	70 - 80	2	92	112	127	160	18	12	M12
SHSB.89.020	70 - 80	2	92	112	225	265	18	15	M12
SHSB.03.030	90 - 100	2	92	112	76	110	14	12	M12
SHSB.05.030	90 - 100	2	92	112	127	160	18	12	M12
SHSB.89.030	90 - 100	2	92	112	225	265	18	15	M12
SHSB.03.040	120	2	106	125	76	110	14	12	M14
SHSB.05.040	120	2	106	125	127	160	18	12	M14
SHSB.89.040	120	2	106	125	225	265	18	15	M14
SHSB.03.050	140 - 150	2	106	150	76	110	14	12	M14
SHSB.05.050	140 - 150	2	106	150	127	160	18	12	M14
SHSB.89.050	140 - 150	2	106	150	225	265	18	15	M14
SHSB.03.060	160-170	2	106	160	76	110	14	12	M14
SHSB.05.060	160-170	2	106	160	127	160	18	12	M14
SHSB.89.060	160-170	2	106	160	225	265	18	15	M14
SHSB.03.070	200	2	116	190	76	110	14	12	M16
SHSB.05.070	200	2	116	190	127	160	18	12	M16
SHSB.89.070	200	2	116	190	225	265	18	15	M16
SHSB.03.080	250	2	116	212	76	110	14	12	M16
SHSB.05.080	250	2	116	212	127	160	18	12	M16
SHSB.89.080	250	2	116	212	225	265	18	15	M16
SHSB.03.090	300	2	116	236	76	110	14	12	M16
SHSB.05.090	300	2	116	236	127	160	18	12	M16
SHSB.89.090	300	2	116	236	225	265	18	15	M16



# SHSB

TUBE - TUBE

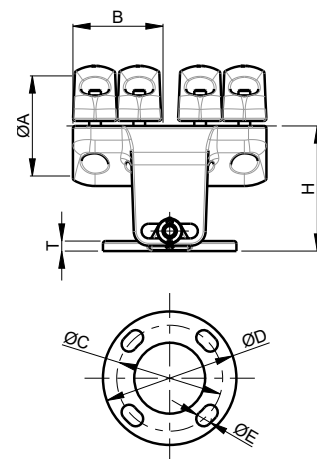


PART NUMBER	A	COVERS A	B	H	C	D	E	T	BOLTS A
SHSB.03.500	2"IPS (60,3mm)	2	92	112	76	110	14	12	M12
SHSB.05.500	2"IPS (60,3mm)	2	92	112	127	160	18	12	M12
SHSB.89.500	2"IPS (60,3mm)	2	92	112	225	265	18	15	M12
SHSB.03.510	2,5"IPS (73mm)	2	92	112	76	110	14	12	M12
SHSB.05.510	2,5"IPS (73mm)	2	92	112	127	160	18	12	M12
SHSB.89.510	2,5"IPS (73mm)	2	92	112	225	265	18	15	M12
SHSB.03.520	3"IPS (88,9mm)	2	92	112	76	110	14	12	M12
SHSB.05.520	3"IPS (88,9mm)	2	92	112	127	160	18	12	M12
SHSB.89.520	3"IPS (88,9mm)	2	92	112	225	265	18	15	M12
SHSB.03.530	3,5"IPS (101,6mm)	2	92	112	76	110	14	12	M12
SHSB.05.530	3,5"IPS (101,6mm)	2	92	112	127	160	18	12	M12
SHSB.89.530	3,5"IPS (101,6mm)	2	92	112	225	265	18	15	M12
SHSB.03.540	4"IPS (114,3mm)	2	106	150	76	110	14	12	M14
SHSB.05.540	4"IPS (114,3mm)	2	106	150	127	160	18	12	M14
SHSB.89.540	4"IPS (114,3mm)	2	106	150	225	265	18	15	M14
SHSB.03.550	5"IPS (141,3mm)	2	106	150	76	110	14	12	M14
SHSB.05.550	5"IPS (141,3mm)	2	106	150	127	160	18	12	M14
SHSB.89.550	5"IPS (141,3mm)	2	106	150	225	265	18	15	M14
SHSB.03.560	6"IPS (168,2mm)	2	106	160	76	110	14	12	M14
SHSB.05.560	6"IPS (168,2mm)	2	106	160	127	160	18	12	M14
SHSB.89.560	6"IPS (168,2mm)	2	106	160	225	265	18	15	M14
SHSB.03.570	8"IPS (219mm)	2	116	212	76	110	14	12	M16
SHSB.05.570	8"IPS (219mm)	2	116	212	127	160	18	12	M16
SHSB.89.570	8"IPS (219mm)	2	116	212	225	265	18	15	M16
SHSB.03.570	8"IPS (219mm)	2	116	212	76	110	14	12	M16
SHSB.05.570	8"IPS (219mm)	2	116	212	127	160	18	12	M16
SHSB.89.570	8"IPS (219mm)	2	116	212	225	265	18	15	M16



# SSHSB

TUBE - TUBE



UP TO  
**400kV**

**A2-70**

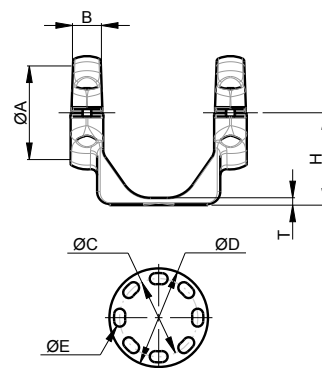


PART NUMBER	A	B	H	C	D	E	T	BOLTS A
SSHSB.03.010	50 - 60	92	112	76	110	14	12	M12
SSHSB.05.010	50 - 60	92	112	127	160	18	12	M12
SSHSB.89.010	50 - 60	92	112	225	265	18	15	M12
SSHSB.03.020	70 - 80	92	112	76	110	14	12	M12
SSHSB.05.020	70 - 80	92	112	127	160	18	12	M12
SSHSB.89.020	70 - 80	92	112	225	265	18	15	M12
SSHSB.03.030	90 - 100	92	112	76	110	14	12	M12
SSHSB.05.030	90 - 100	92	112	127	160	18	12	M12
SSHSB.89.030	90 - 100	92	112	225	265	18	15	M12
SSHSB.03.040	120	106	125	76	110	14	12	M14
SSHSB.05.040	120	106	125	127	160	18	12	M14
SSHSB.89.040	120	106	125	225	265	18	15	M14
SSHSB.03.050	140 -150	106	150	76	110	14	12	M14
SSHSB.05.050	140 -150	106	150	127	160	18	12	M14
SSHSB.89.050	140 -150	106	150	225	265	18	15	M14
SSHSB.03.060	160-170	106	160	76	110	14	12	M14
SSHSB.05.060	160-170	106	160	127	160	18	12	M14
SSHSB.89.060	160-170	106	160	225	265	18	15	M14
SSHSB.03.070	200	116	190	76	110	14	12	M16
SSHSB.05.070	200	116	190	127	160	18	12	M16
SSHSB.89.070	200	116	190	225	265	18	15	M16
SSHSB.03.080	250	116	212	76	110	14	12	M16
SSHSB.05.080	250	116	212	127	160	18	12	M16
SSHSB.89.080	250	116	212	225	265	18	15	M16
SSHSB.03.090	300	116	236	76	110	14	12	M16
SSHSB.05.090	300	116	236	127	160	18	12	M16
SSHSB.89.090	300	116	236	225	265	18	15	M16



# SXHB

TUBE - TUBE



UP TO  
**400kV**

**A2-70**



PART NUMBER	A	B	H	C	D	E	T	BOLTS A
SXHB.05.010	50 - 60	46	112	127	160	18	12	M12
SXHB.89.010	50 - 60	46	112	225	265	18	15	M12
SXHB.05.020	70 - 80	46	112	127	160	18	12	M12
SXHB.89.020	70 - 80	46	112	225	265	18	15	M12
SXHB.05.030	90 - 100	46	112	127	160	18	12	M12
SXHB.89.030	90 - 100	46	112	225	265	18	15	M12
SXHB.05.040	120	53	125	127	160	18	12	M14
SXHB.89.040	120	53	125	225	265	18	15	M14
SXHB.05.050	140 - 150	53	150	127	160	18	12	M14
SXHB.89.050	140 - 150	53	150	225	265	18	15	M14
SXHB.05.060	160-170	53	160	127	160	18	12	M14
SXHB.89.060	160-170	53	160	225	265	18	15	M14
SXHB.05.070	200	58	190	127	160	18	12	M16
SXHB.89.070	200	58	190	225	265	18	15	M16
SXHB.05.080	250	58	212	127	160	18	12	M16
SXHB.89.080	250	58	212	225	265	18	15	M16
SXHB.05.090	300	58	236	127	160	18	12	M16
SXHB.89.090	300	58	236	225	265	18	15	M16
SXHB.05.500	2"IPS (60,3mm)	46	112	127	160	18	12	M12
SXHB.89.500	2"IPS (60,3mm)	46	112	225	265	18	15	M12
SXHB.05.510	2,5"IPS (73mm)	46	112	127	160	18	12	M12
SXHB.89.510	2,5"IPS (73mm)	46	112	225	265	18	15	M12
SXHB.05.520	3"IPS (88,9mm)	46	112	127	160	18	12	M12
SXHB.89.520	3"IPS (88,9mm)	46	112	225	265	18	15	M12
SXHB.05.530	3,5"IPS (101,6mm)	46	112	127	160	18	12	M12
SXHB.89.530	3,5"IPS (101,6mm)	46	112	225	265	18	15	M12
SXHB.05.540	4"IPS (114,3mm)	53	125	127	160	18	12	M14
SXHB.89.540	4"IPS (114,3mm)	53	125	225	265	18	15	M14
SXHB.05.550	5"IPS (141,3mm)	53	150	127	160	18	12	M14
SXHB.89.550	5"IPS (141,3mm)	53	150	225	265	18	15	M14
SXHB.05.560	6"IPS (168,2mm)	53	160	127	160	18	12	M14
SXHB.89.560	6"IPS (168,2mm)	53	160	225	265	18	15	M14
SXHB.05.570	8"IPS (219mm)	58	212	127	160	18	12	M16
SXHB.89.570	8"IPS (219mm)	58	212	225	265	18	15	M16