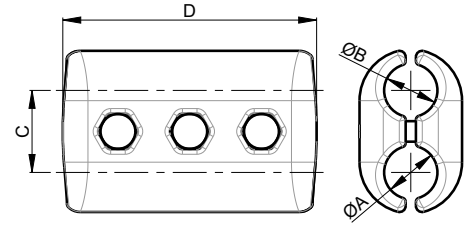


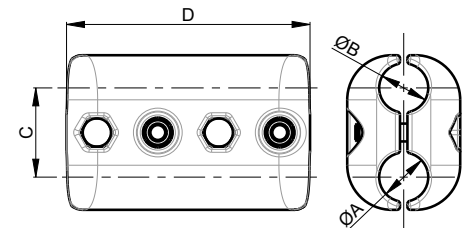
# SP01

CABLE - CABLE



UP TO **400kV** **BIMET** CUPAL or TIN **A2-70**

PART NUMBER	A	B	C	D	BOLTS B
SP.01.010	10 - 24	10 - 24	43	108	M10
SP.01.020	10 - 24	24 - 33	57	108	M10
SP.01.030	10 - 24	33 - 45	60	108	M10
SP.01.040	10 - 24	45 - 52	60	108	M10
SP.01.080	24 - 28	33 - 40	60	108	M10
SP.01.090	24 - 28	40 - 52	60	108	M10
SP.01.100	24 - 33	24 - 33	60	123	M12

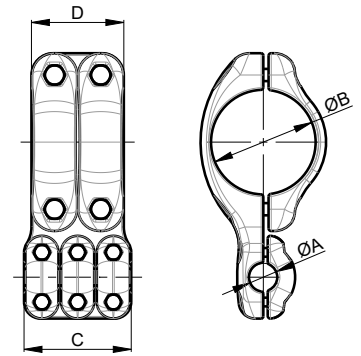


UP TO **400kV** **BIMET** CUPAL or TIN **A2-70**

PART NUMBER	A	B	C	D	BOLTS B
SP.01.120	28 - 33	33 - 40	65	164	M12
SP.01.130	28 - 33	45 - 52	70	164	M12
SP.01.140	29 - 45	29 - 45	73	164	M12
SP.01.150	33 - 45	45 - 52	70	164	M12
SP.01.160	45 - 52	45 - 52	78	164	M12

## SP02

TUBE - CABLE



PART NUMBER	A	B	COVERS A	C	COVERS B	D	BOLTS A	BOLTS B	CURRENT [A]
SP02.010	16 - 24	30 - 40	2	72	2	82	M8	M10	800
SP02.020	16 - 24	50 - 60	2	72	2	92	M8	M12	800
SP02.030	16 - 24	70 - 80	2	72	2	92	M8	M12	800
SP02.040	16 - 24	90 - 100	2	72	2	92	M8	M12	800
SP02.050	16 - 24	120	2	72	2	106	M8	M14	800
SP02.060	16 - 24	140 -150	2	72	2	106	M8	M14	800
SP02.070	16 - 24	160-170	2	72	2	106	M8	M14	800
SP02.080	16 - 24	200	2	72	2	116	M8	M16	800
SP02.090	16 - 24	250	2	72	2	116	M8	M16	800
SP02.100	16 - 24	300	2	72	2	116	M8	M16	800
SP02.110	24 - 33	30 - 40	2	82	2	82	M10	M10	1250
SP02.120	24 - 33	50 - 60	2	82	2	92	M10	M12	1250
SP02.130	24 - 33	70 - 80	2	82	2	92	M10	M12	1250
SP02.140	24 - 33	90 - 100	2	82	2	92	M10	M12	1250
SP02.150	24 - 33	120	2	82	2	106	M10	M14	1250
SP02.160	24 - 33	140 -150	2	82	2	106	M10	M14	1250
SP02.170	24 - 33	160-170	2	82	2	106	M10	M14	1250
SP02.180	24 - 33	200	2	82	2	116	M10	M16	1250
SP02.190	24 - 33	250	2	82	2	116	M10	M16	1250
SP02.200	24 - 33	300	2	82	2	116	M10	M16	1250
SP02.210	33 - 45	30 - 40	3	123	2	82	M10	M10	1600
SP02.220	33 - 45	50 - 60	3	123	2	92	M10	M12	1600
SP02.230	33 - 45	70 - 80	3	123	2	92	M10	M12	1600
SP02.240	33 - 45	90 - 100	3	123	2	92	M10	M12	1600
SP02.250	33 - 45	120	3	123	2	106	M10	M14	1600
SP02.260	33 - 45	140 -150	3	123	2	106	M10	M14	1600
SP02.270	33 - 45	160-170	3	123	2	106	M10	M14	1600
SP02.280	33 - 45	200	3	123	2	116	M10	M16	1600
SP02.290	33 - 45	250	3	123	2	116	M10	M16	1600
SP02.300	33 - 45	300	3	123	2	116	M10	M16	1600
SP02.310	45 - 50	30 - 40	3	123	2	82	M10	M10	2000
SP02.320	45 - 50	50 - 60	3	123	2	92	M10	M12	2000
SP02.330	45 - 50	70 - 80	3	123	2	92	M10	M12	2000
SP02.340	45 - 50	90 - 100	3	123	2	92	M10	M12	2000
SP02.350	45 - 50	120	3	123	2	106	M10	M14	2000
SP02.360	45 - 50	140 -150	3	123	2	106	M10	M14	2000
SP02.370	45 - 50	160-170	3	123	2	106	M10	M14	2000
SP02.380	45 - 50	200	3	123	2	116	M10	M16	2000
SP02.390	45 - 50	250	3	123	2	116	M10	M16	2000
SP02.400	45 - 50	300	3	123	2	116	M10	M16	2000